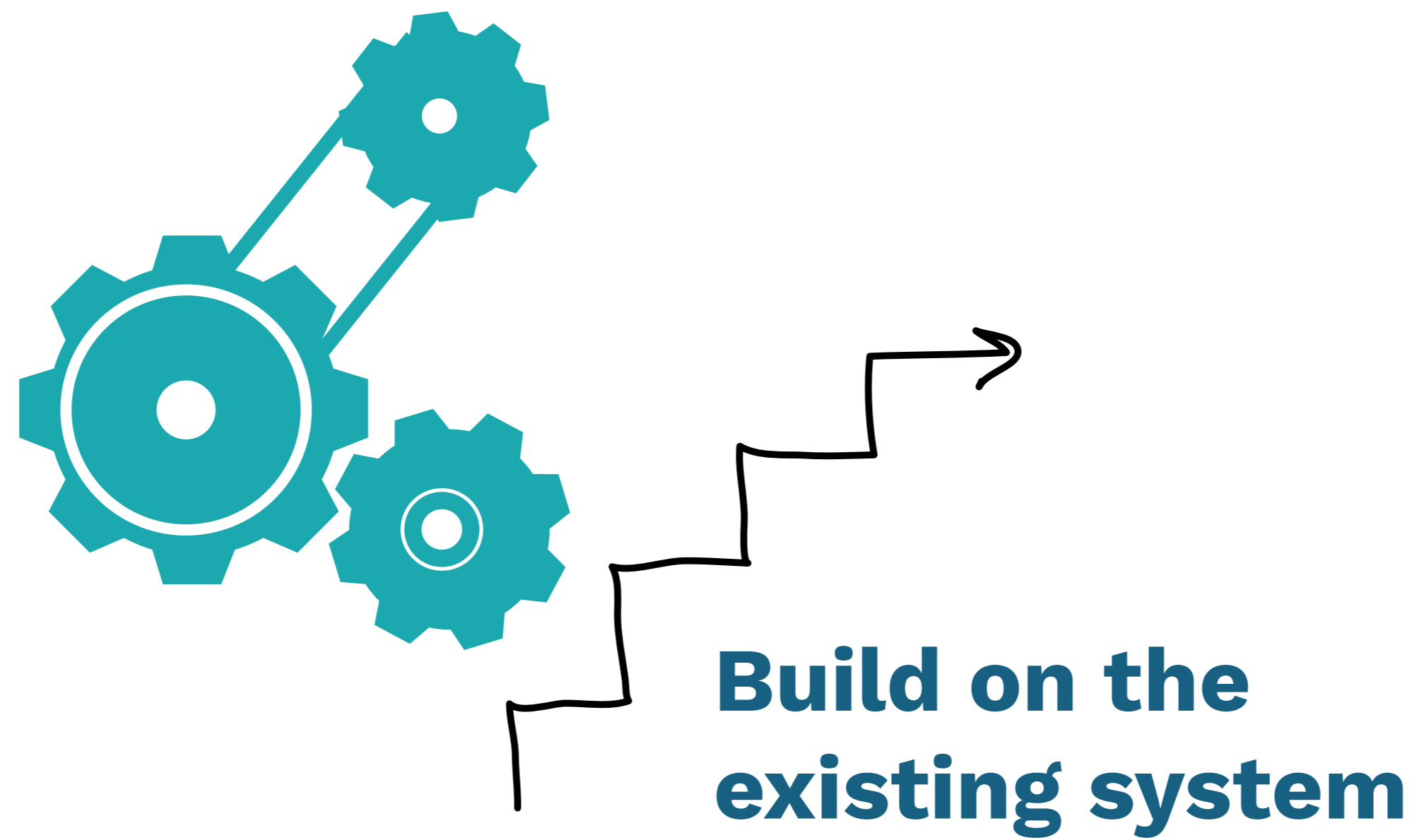


Key points about Waste Picker integration



Redress unequal power relations and pay waste pickers



**Recognize
Listen
Register
Cooperate**



**Reclaim
Revalue
Reframe**

training programme



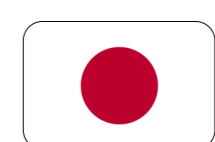
.....
**Building Capacity for
Waste Picker Integration**

Text: Melanie Samson (University of Johannesburg), Tanya Zack, Kirsten Harrison
Design and illustrations: Willemijn Schellekens - PhatTale Story-Play-Design

Partners:



UNITED NATIONS
INDUSTRIAL DEVELOPMENT ORGANIZATION



UNIVERSITY OF THE
WITWATERSRAND
JOHANNESBURG

www.wastepickerintegration.org